



Kimochis®

www.kimochis.com

© 2011 Plushy Feely Corp.

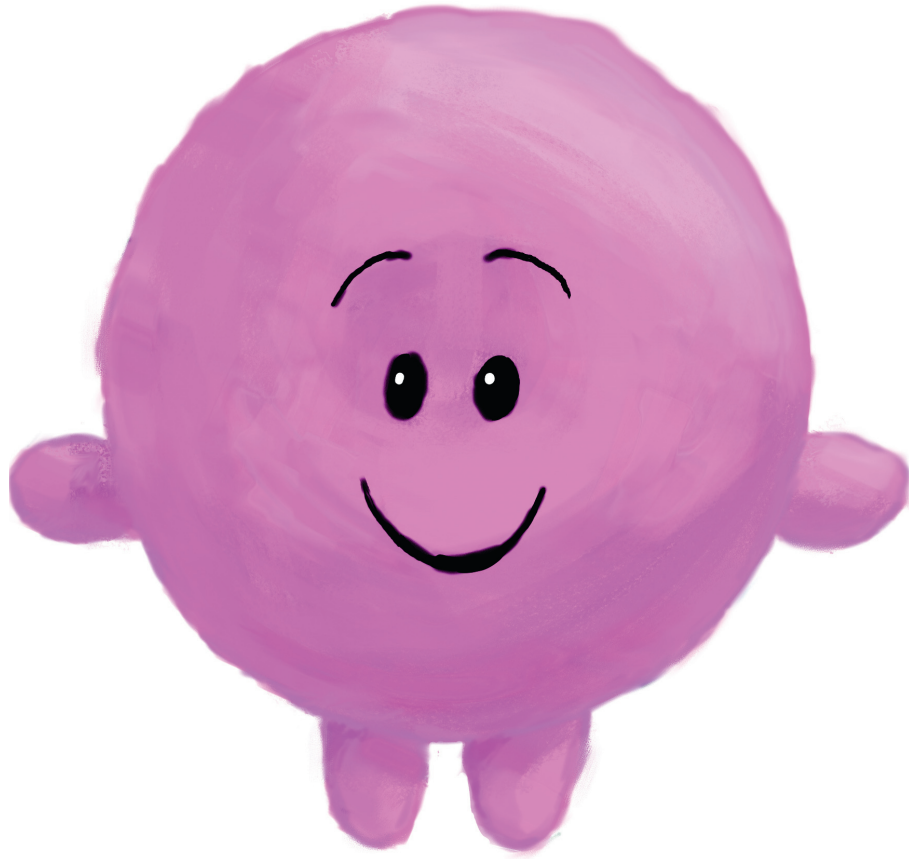


HAPPY



KOTOWAZA

Happiness comes from
within and then spreads.



FRIENDLY



KOTOWAZA

Friendly faces create
friendly places.



SAD



KOTOWAZA

Being sad reminds us how
to appreciate being happy.



MAD



KOTOWAZA

It's okay to be mad,
but it's not okay to be mean.



BRAVE



KOTOWAZA

Be brave enough to stand up and speak
or brave enough to sit down and listen.



LEFT OUT



KOTOWAZA

It's always more fun when
we make room for everyone.



SILLY



KOTOWAZA

For silly to be fun,
it has to be fun for everyone.



FRUSTRATED



KOTOWAZA

Frustration can often
lead you to success.



CURIOUS



KOTOWAZA

Follow your curiosity
when it is safe and kind.



CRANKY



KOTOWAZA

Being kind during cranky
moments shows real character.



HOPEFUL



KOTOWAZA

A hopeful heart makes
many things possible.



PROUD



KOTOWAZA

I am happy for you
and happy for me.